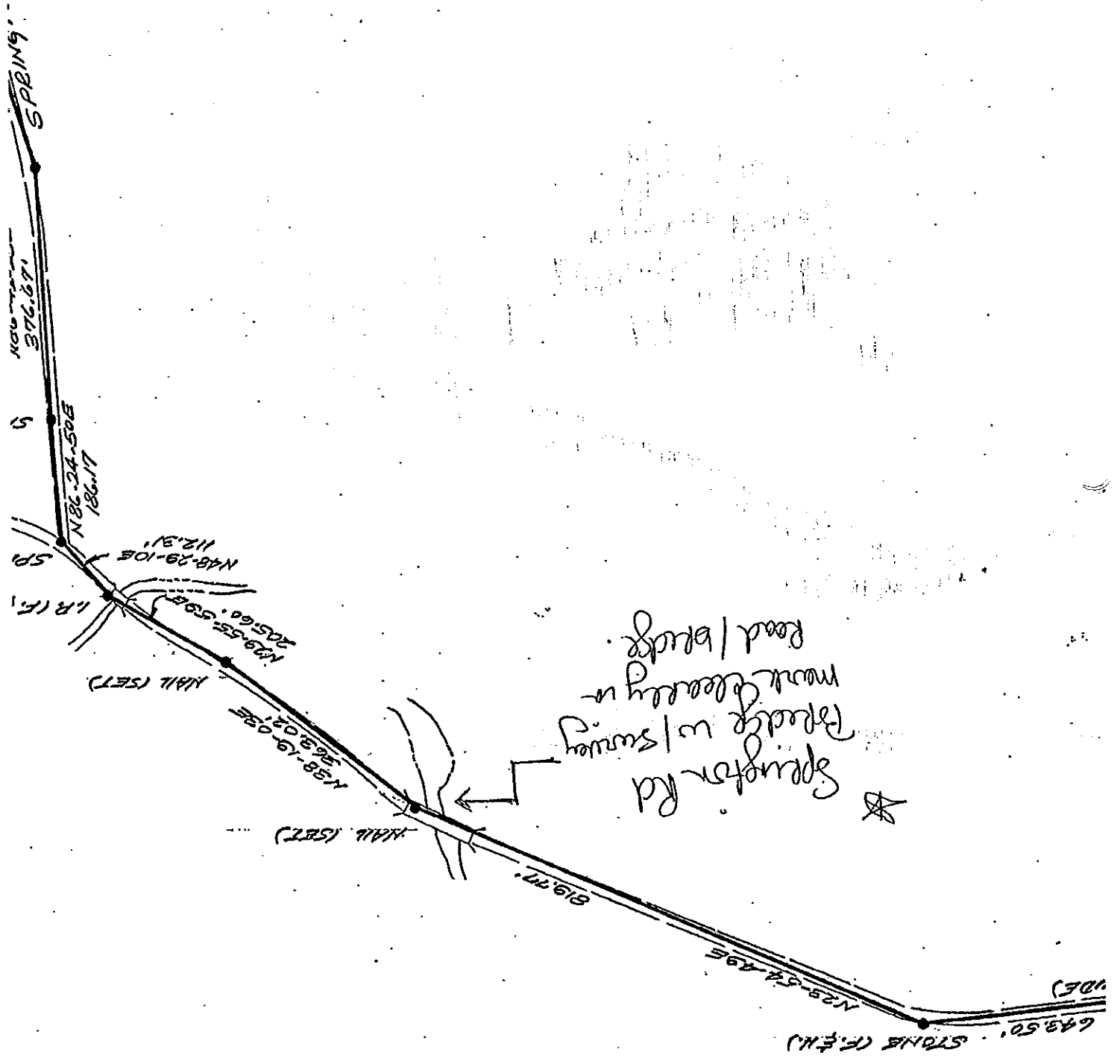
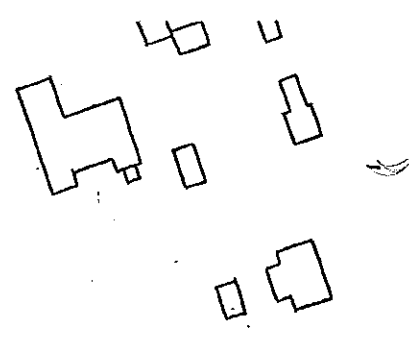
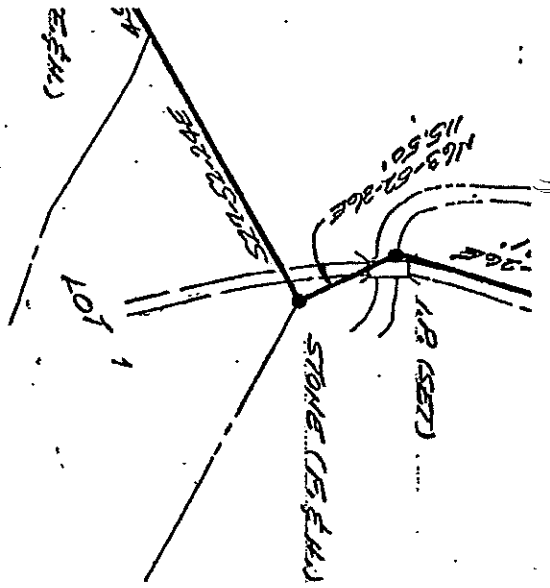


Historical Commission Update for the Wallace Board of Supervisors Meeting  
February 4, 2010

- Lamb Tavern Springhouse – The commission submitted an estimate for the stabilization of the Lamb Tavern Springhouse wall, prepared by Norman Glass, at the December Board of Supervisors meeting. Additional estimates were requested at that time. At the regular January Meeting of the Historical Commission it was decided that, similarly to the Schoolhouse, it is not the Historical Commission's responsibility to select companies and solicit multiple work estimates. Perhaps an advertisement should be posted or another option should be pursued to obtain additional estimates if necessary. There is a clear need to reinforce/stabilize the wall – the Historical Commission has brought the condition of the Springhouse to the attention of the Board on multiple occasions, in multiple formats, depending upon the level of deterioration over the years. The Commission has solicited and provided a reasonable estimate from a local resident and historic preservationist. Please advise how the Board will proceed with the stabilization of the Springhouse.
- The Springton Manor Bridge – Attached are copies of a 1981 survey of the Springton Manor Farm Boundary – reminder: the Springton Manor Farm is on the National Register of Historic Places – prepared by Quinn and Associates. It clearly shows that the Springton Manor Bridge is part of the boundary with a point being shown in the road. This supports the argument that the Wallace Township Historical Commission and Jane Davidson, Historian and Resident, among other concerned citizens and groups was making to preserve the Springton Road Bridge. It is unfortunate that our concerns fell on deaf ears and the ball was dropped at so many levels throughout Local Government, PennDot, and State Preservation Agencies. Based on this survey, much more investigation should have been completed and the situation should not have been so cavalierly dismissed. Now this valuable historic resource, part of the National Register and so important to Wallace Township is going to be destroyed vs. a much less expensive and time consuming improvement. A copy of the complete survey (too large to attach) will be kept in the Historical Commission's archives and given to the township for their records. Hopefully this situation will be a learning experience for all involved in Local and State Government, PennDot, and State Preservation Agencies.
- Springton Manor Bridge Dedication Stone – It is of great concern to the Historical Commission that the Stone Dedication located on the bridge is going to be preserved in a safe location, free from loss or damage, until the time that it is ready to be reinstalled on the new bridge. What are the plans of the Township to insure that this last remaining piece of history from the bridge will be preserved? Please advise with a specific action plan.
- The 2010 Historical Commission Chairman is Jennifer Harkins, Vice Chairman is Stephanie Grunwell and Secretary is Beverly Bock.





12

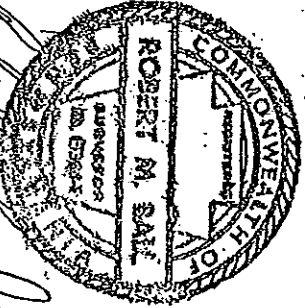
Parcel,  
Survey &  
Asse

— TO BE ACQUIRED BY —  
CHESTER COUNTY PORT & RECREATION BOARD

PLAN OF PROPERTY

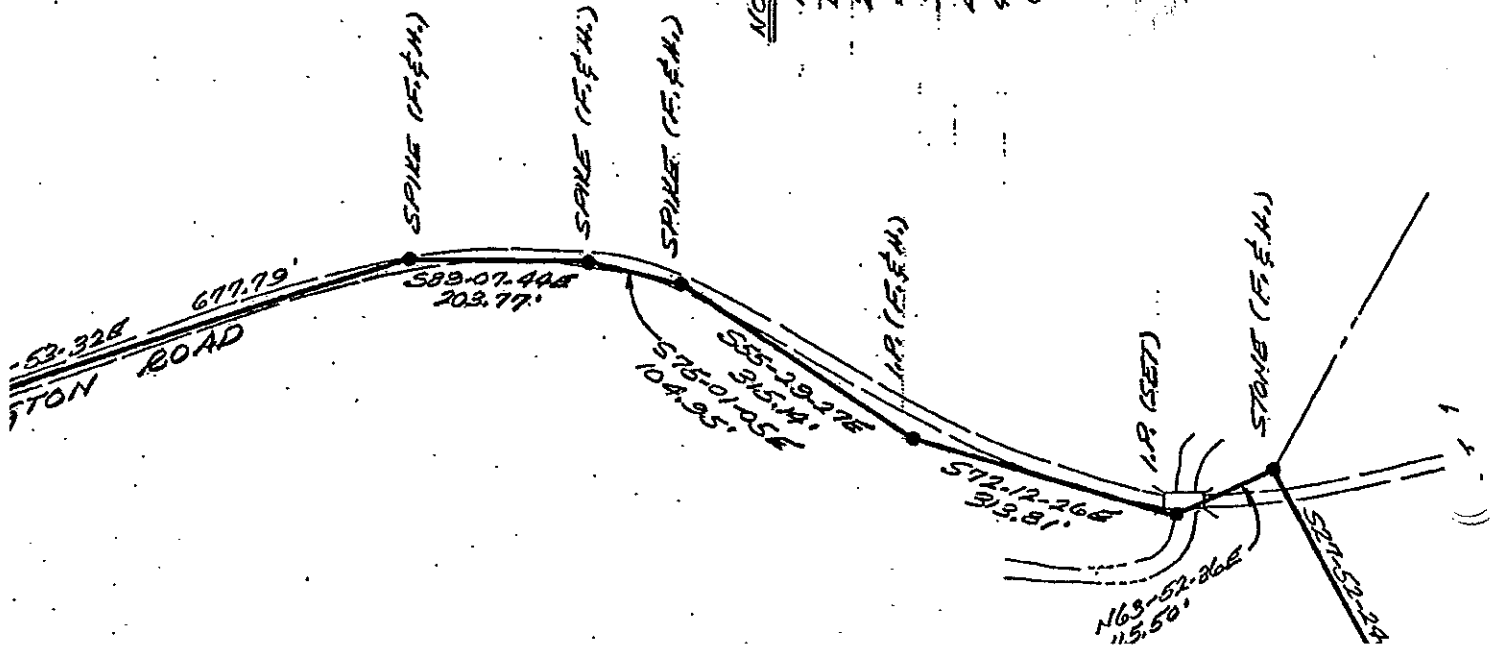
— OF —  
SPRINGTON MAJOR FIRM  
WALLACE TOWNSHIP  
CHESTER COUNTY PA.

QUINN & ASSOCIATES INC.  
400 CARADEN DRIVE  
ROPSHAM PA. 19044



*Robert M. Satt*

PLAN NUMBER	SCALE	DRAWN BY	CHECKED BY	SHEET NUMBER
81078	1" = 200'	Luigi	R.M.S.	1 OF 1
DATE				
11-4-81				



NOTES:

1. PROPERTY PLOTTED FROM FIELD SURVEY PERFORMED BY QUINN & ASSOCIATES, INC. OCT. 12, 1981
2. TOPOGRAPHY TAKEN FROM "TOPOGRAPHIC MAP OF SPRINGTON MAJOR FARM" BY QUINN AND ASSOCIATES.
3. ALL MONUMENTS DO EXIST IN THE FIELD AS LOCATED ON THIS PLAN.
4. BEARING BASED ON THE PENNSYLVANIA PLANE COORDINATE SYSTEM (SOUTH ZONE).